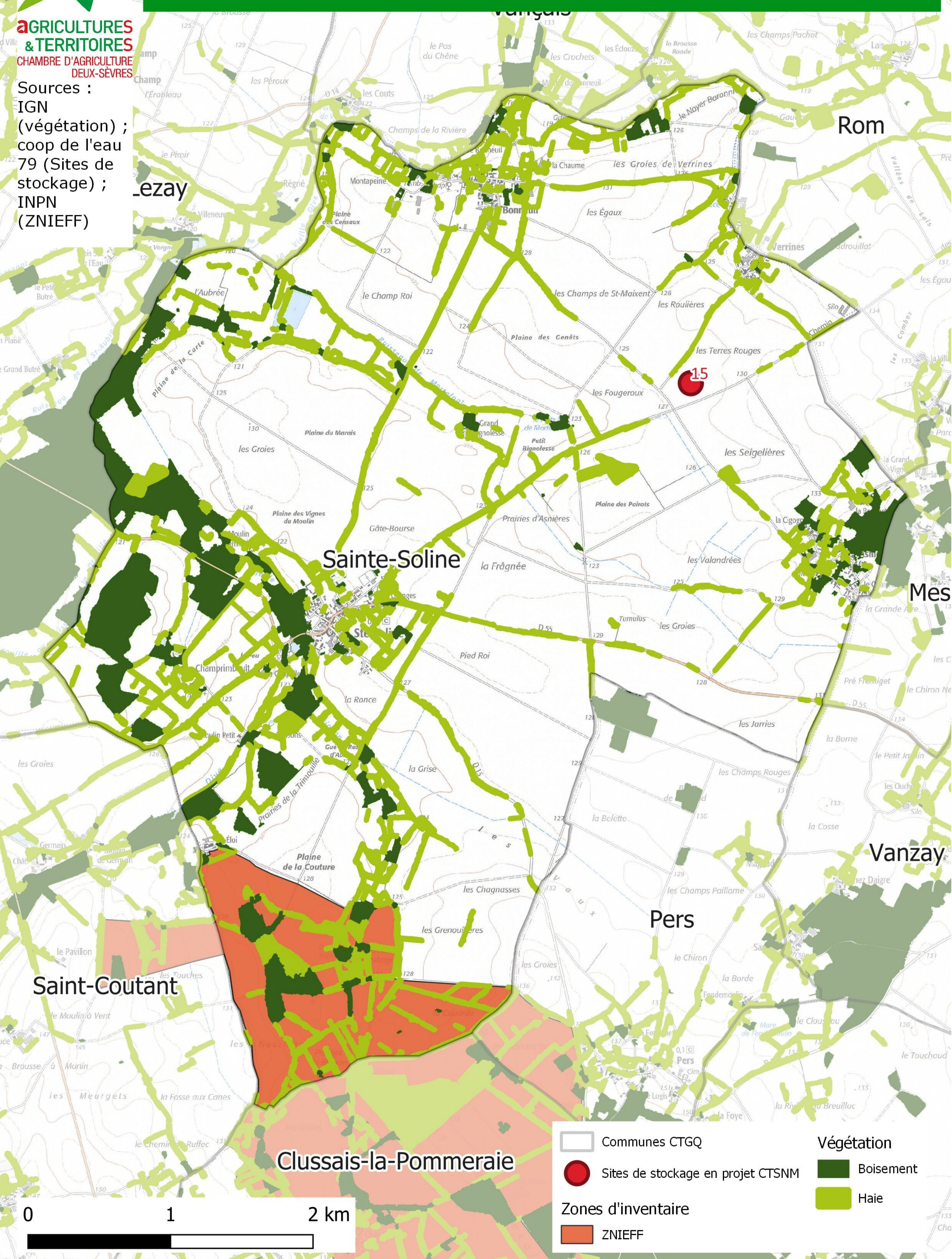




AGRICULTURES & TERRITOIRES
CHAMBRE D'AGRICULTURE DEUX-SÈVRES

Sources :
IGN
(végétation) ;
coop de l'eau
79 (Sites de
stockage) ;
INPN
(ZNIEFF)

Intérêt écologique de Sainte-Soline

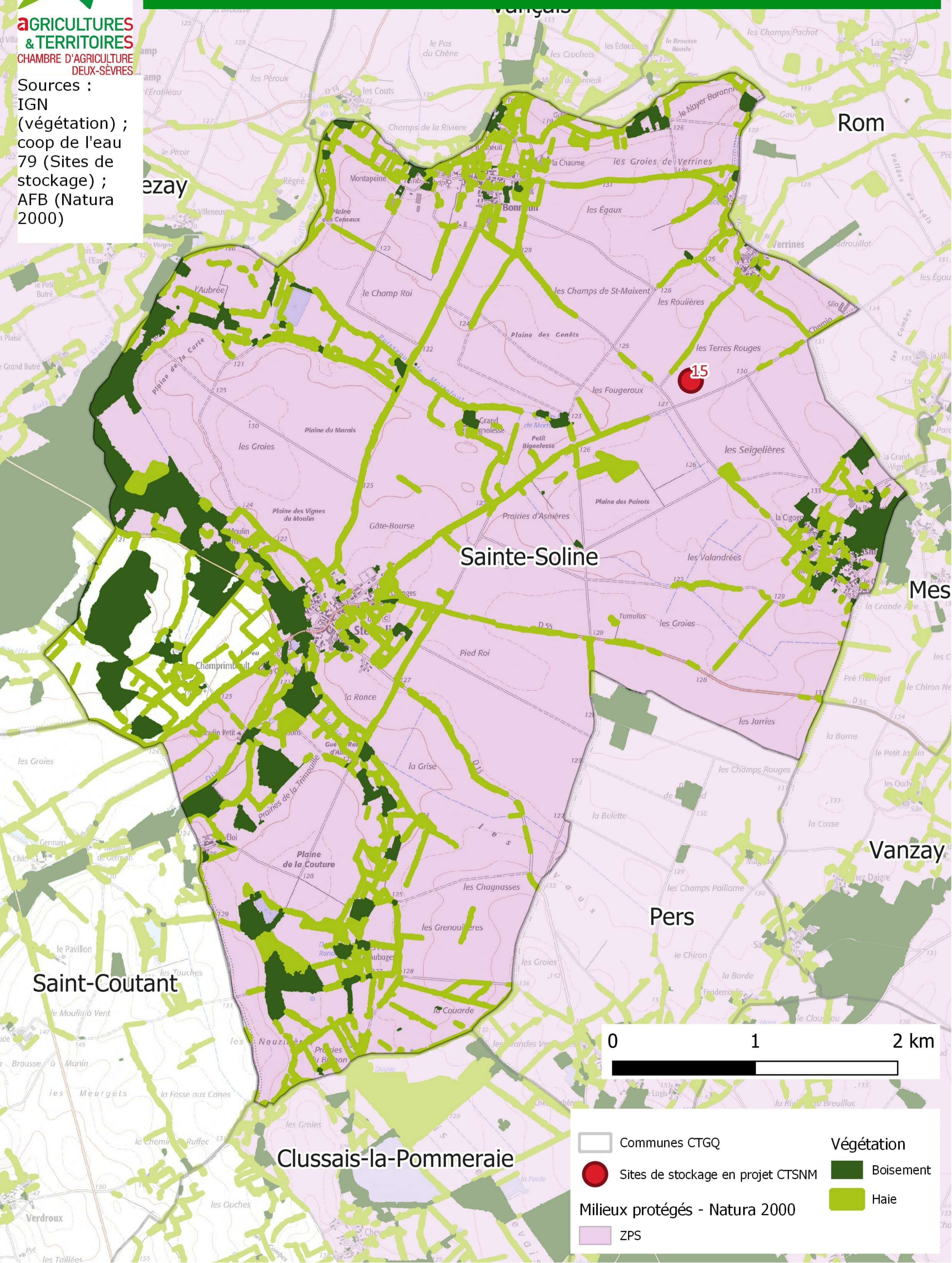








| | | | |
|--|-----------------------------------|--|-------------------------|
| | Communes CTGQ | | Végétation Boisement |
| | Sites de stockage en projet CTSNM | | Haie |
| | Zones d'inventaire ZNIEFF | | |

0 1 2 km

Sources :
IGN
(végétation) ;
coop de l'eau
79 (Sites de
stockage) ;
AFB (Natura
2000)

Zones protégées de Sainte-Soline



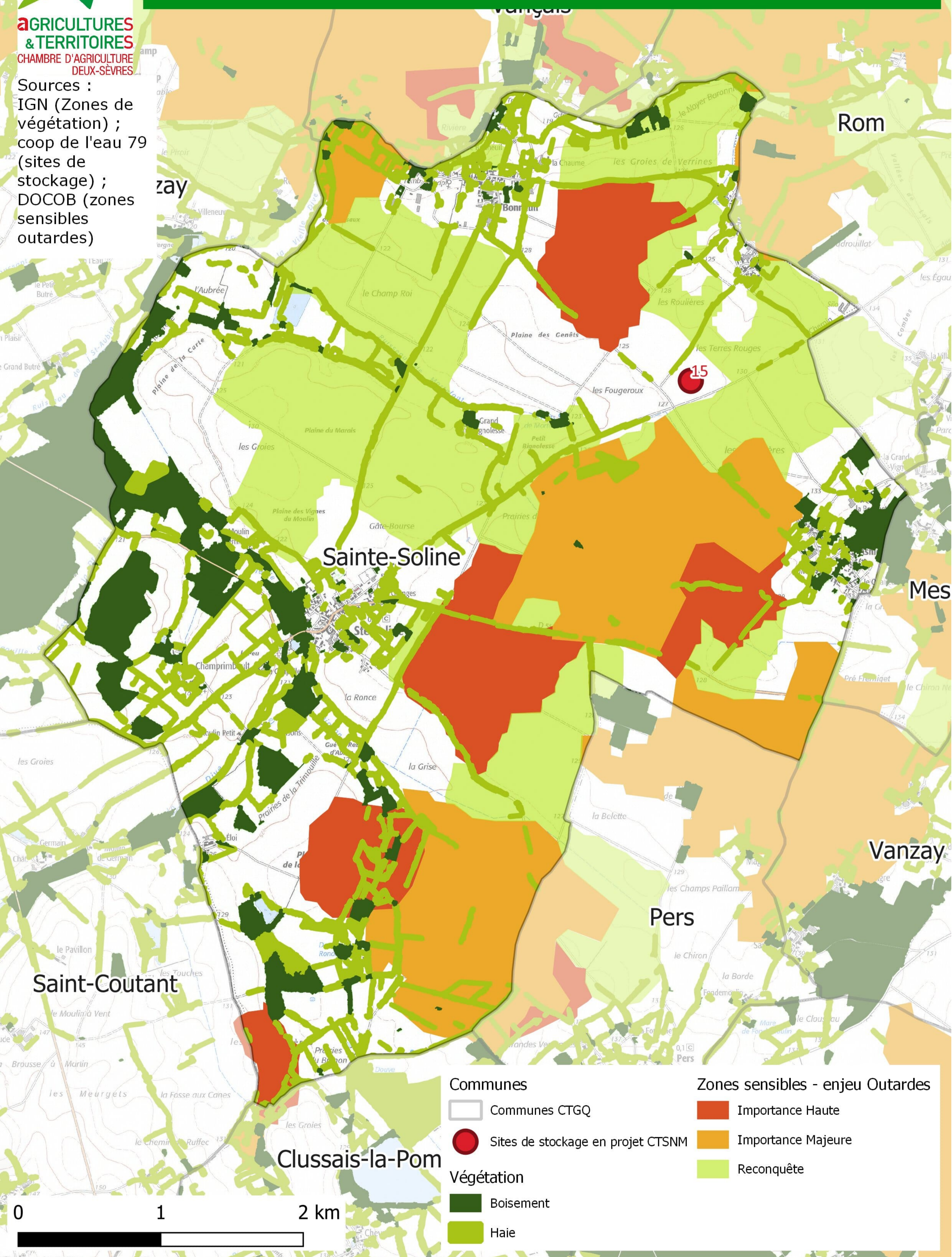
| | | | |
|---|-----------------------------------|---|-----------|
|  | Communes CTGQ |  | Boisement |
|  | Sites de stockage en projet CTSNM |  | Haie |
|  | Milieus protégés - Natura 2000 | | |
|  | ZPS | | |



**AGRICULTURES
& TERRITOIRES**
CHAMBRE D'AGRICULTURE
DEUX-SÈVRES

Sources :
IGN (Zones de
végétation) ;
coop de l'eau 79
(sites de
stockage) ;
DOCOB (zones
sensibles
outardes)

Zones sensibles à Outardes de Sainte-Soline



Communes

- Communes CTGQ
- Sites de stockage en projet CTSNM

Végétation

- Boisement
- Haie

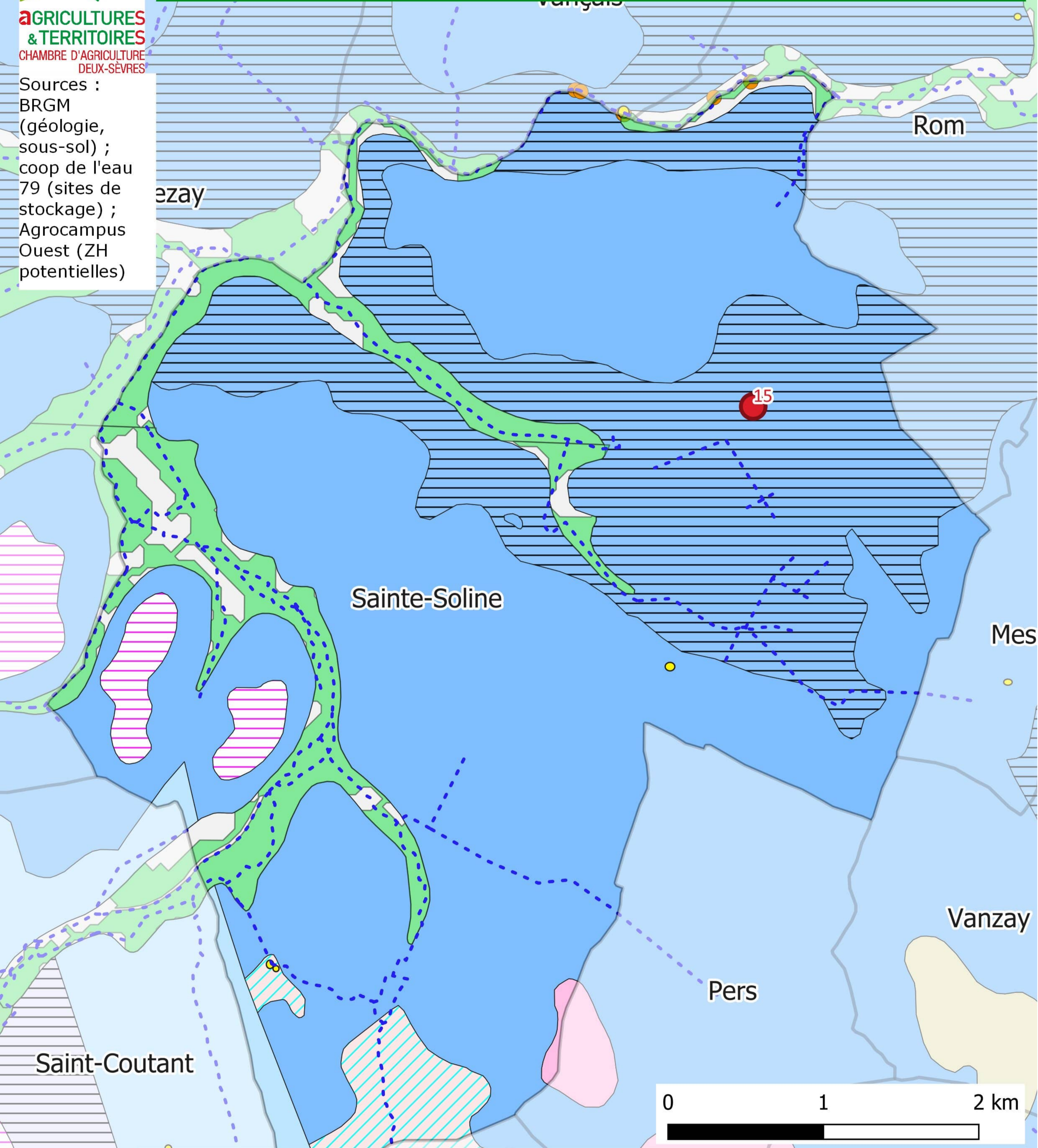
Zones sensibles - enjeu Outardes










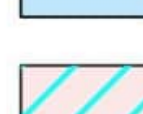



- Importance Haute
- Importance Majeure
- Reconquête

0 1 2 km

Sources :
BRGM
(géologie,
sous-sol) ;
coop de l'eau
79 (sites de
stockage) ;
Agrocampus
Ouest (ZH
potentielles)

Géologie et zones humides potentielles associées de Sainte-Soline



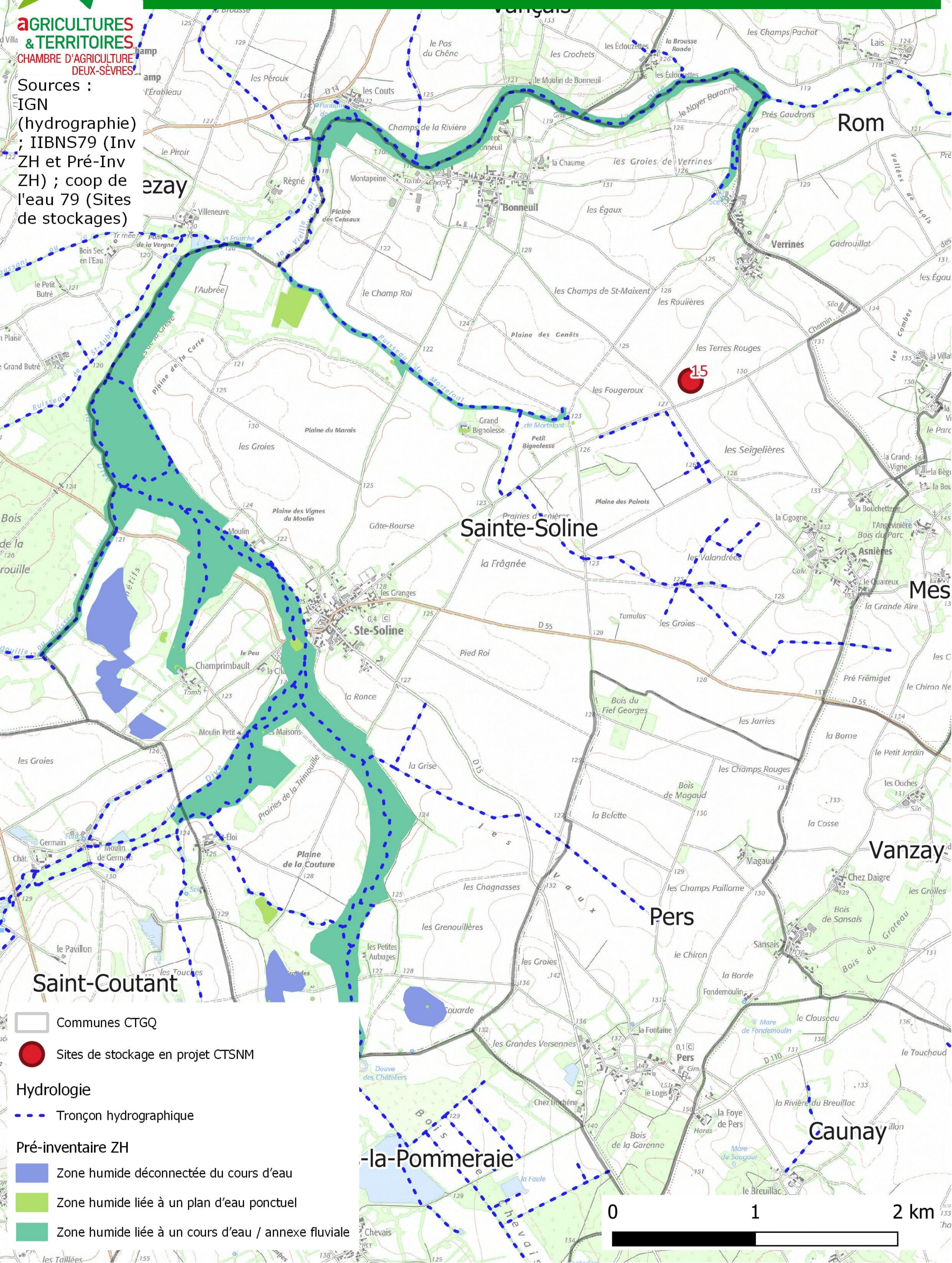
| | | |
|--|--|--|
|  Communes CTGQ |  Alluvions récentes | Sous-sol |
|  Sites de stockage en projet CTSNM |  Formation des plateaux |  Dolines |
| Hydrologie |  Silicification sur calcaires de la Mothe-Saint-Héray |  Gouffres |
|  Tronçon hydrographique |  Formation des Marnes à spongiaires indifférenciées | Probabilité de zones humides |
| Geologie |  Formation des calcaires de la Mothe-Saint-Héray |  Forte |
|  Formation des Marnes à spongiaires |  Formations de Marans et Calcaires blancs de Fors | |



AGRICULTURES & TERRITOIRES
CHAMBRE D'AGRICULTURE DEUX-SÈVRES

Sources :
IGN
(hydrographie)
; IIBNS79 (Inv ZH et Pré-Inv ZH) ; coop de l'eau 79 (Sites de stockages)

Zones humides de Sainte-Soline



- Communes CTGQ
- Sites de stockage en projet CTSNM

Hydrologie
- - - Tronçon hydrographique

- Pré-inventaire ZH
- Zone humide déconnectée du cours d'eau
 - Zone humide liée à un plan d'eau ponctuel
 - Zone humide liée à un cours d'eau / annexe fluviale

